



## **OAW / EAW Editing Overview: File Structure, Tools and Documents**

This page covers how default files are contained within EAW, how to obtain them for Editing, and some of the tools available.

The relation to OAW Mission 1 files and their uses.

---

### **EAW Data File Structure: Where and How? - a Brief Summary:**

The main default Data files used by EAW are contained within compressed files (sometimes called "cabinets").

These files are copied from the CD to your Hard Drive during the installation of EAW. They are found in the EAW folder there (just as all EAW files do) and are accessed by EAW.exe (the "Executable" file; which is like the "Heart" of the program) when EAW runs.

These compressed file cabinets are of a specific type called "**CDF's**" on account of their file extension of **.CDF**. The individual Data files contained within these .CDF's can only be "extracted" (unpacked or uncompressed) for editing by use of a program called **CDFRW.exe** (or CDFR.exe for the DOS version). While not so self-explanatory it is a very simple program and easy to use.

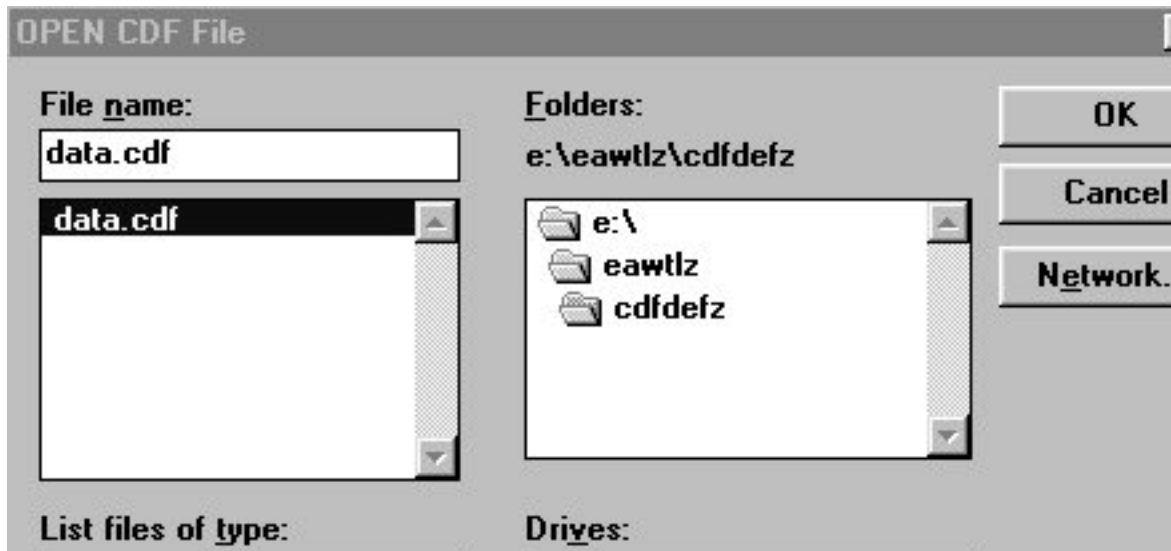
There are 22 .CDF's in EAW. But we are mainly concerned with the **DATA.CDF** which contains the .dat files (also EAW.tm and EAW.hm files) we are concerned with.

### ----- Extracting EAW files from the .CDF archives -----

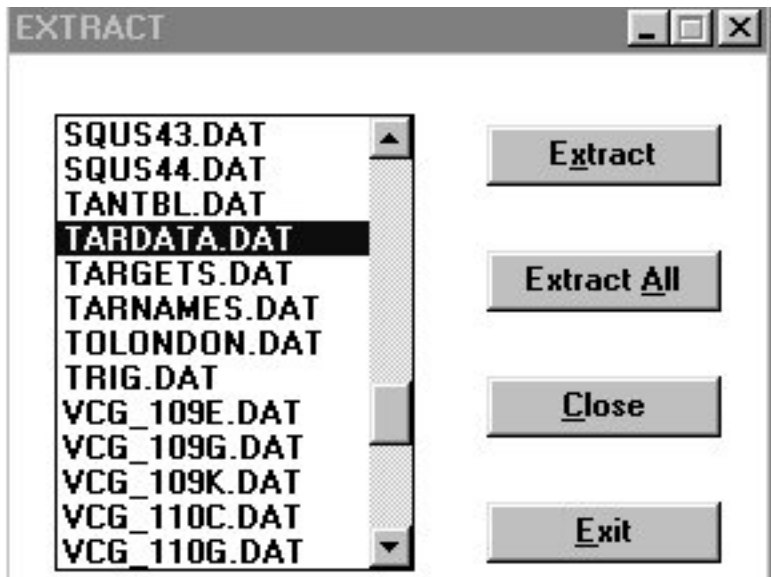
Files you need are extracted from DATA.CDF by use of the CDFRW.exe program as shown.

1. Put the CDFRW.exe program in an empty folder.
2. Put a copy of the EAW file: DATA.CDF in the same folder
3. Open CDFRW.exe (double click it)
4. Select the DATA.CDF as shown and click "O.K."

Shown here is CDFRW.exe with the DATA.CDF selected.



Shown next is the CDFRW.exe program ready to extract the default Tardata.dat from the DATA.CDF



5. Now select the file you want to extract (or you could just "extract all" the files)

6. Extract it by clicking "Extract"

The file or files extracted will appear in the same folder.

7. Close the .CDF or Exit the program when done with all files.

---

### The OAW / EAW Data Files: Essential Files for Editing:

The following describes the use of Data Files, Documents where the overall information about these files can be found, Current Links to obtain the Documents.

**Table 1: Table showing Data Files and Some Use in OAW Mission 1 and EAW**

Data File Name	Edited for use in OAWMission1?	EAW Data Use Function
<i>Frntline.dat</i>	Yes	Sets the Allied/Axis frontlines

<i>Targets.dat</i>	Yes	Activates the Targets or deactivates them; Sets entire Target locations; Assigns address pointers to Tardata for EAW to find the individual object records
<i>Tardata.dat</i>	Yes	Encodes specific target data and Target codes
<i>Airfield.dat</i>	Yes	Codes airfields as active or not; also some location info &mp; cross checks
<i>Griddata.dat</i>	Yes	Codes special location information; sets appearance of Targets on Map
EAW.hm	Alps Option	Controls elevations of terrain tiles
EAW.tm	No	Controls tile layout

***The 5 files; Frntline.dat, Targets.dat, Tardata.dat, Airfield.dat, and Griddata.dat are essential to operation of OAW Mission 1.***

This is main point of EAW Editing for OAW: By Editing these 5 files you can create an OAW Mission.

For EAW Editing in general as well, you will almost always be editing at least these files to create a basic Scenario. For more advanced Scenarios you may need to edit other files as well.